

## BELGIAN RINGING SCHEME (BLB)

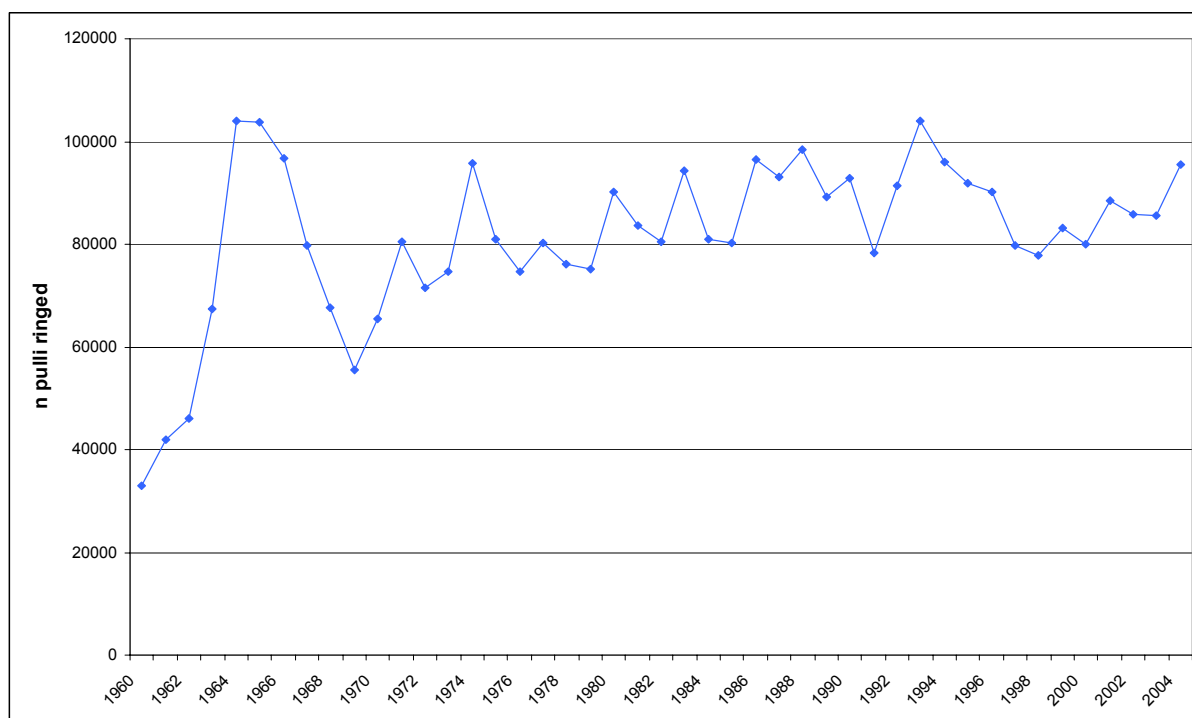
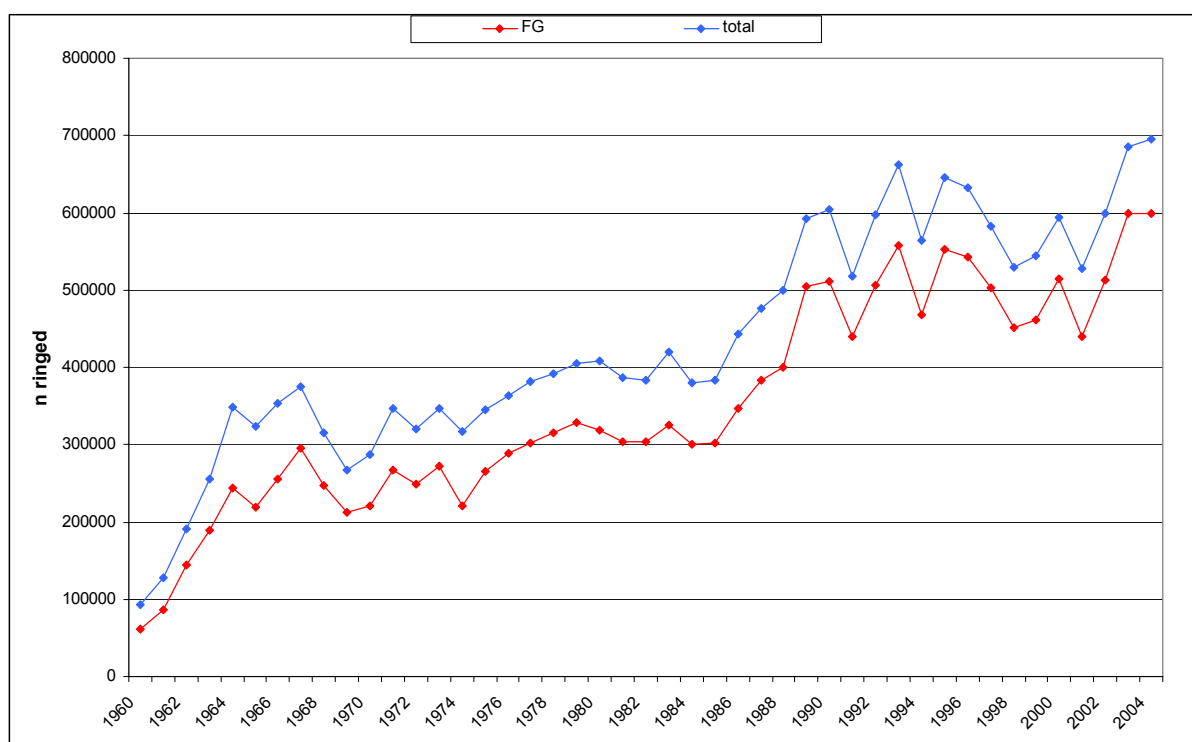
Report at the EURING General Assembly Strasbourg 24-25 August 2005

**Organisation:** Since 1927, bird ringing in Belgium is coordinated by the Royal Belgian Institute for Natural Sciences.

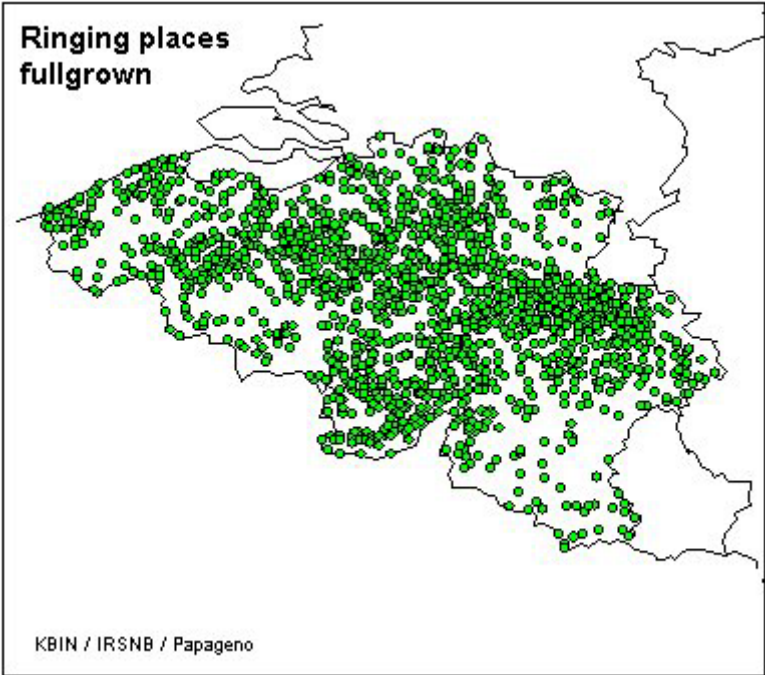
**Staff:** one academic and 3 part time non academic staff members. The last two full time staff members that left the ringing office were not replaced. This means a serious understaffing for the moment being.

**Ringers:** 374 licensed ringers were registered in 2004 (after a training period of 4 years and 2 exams)

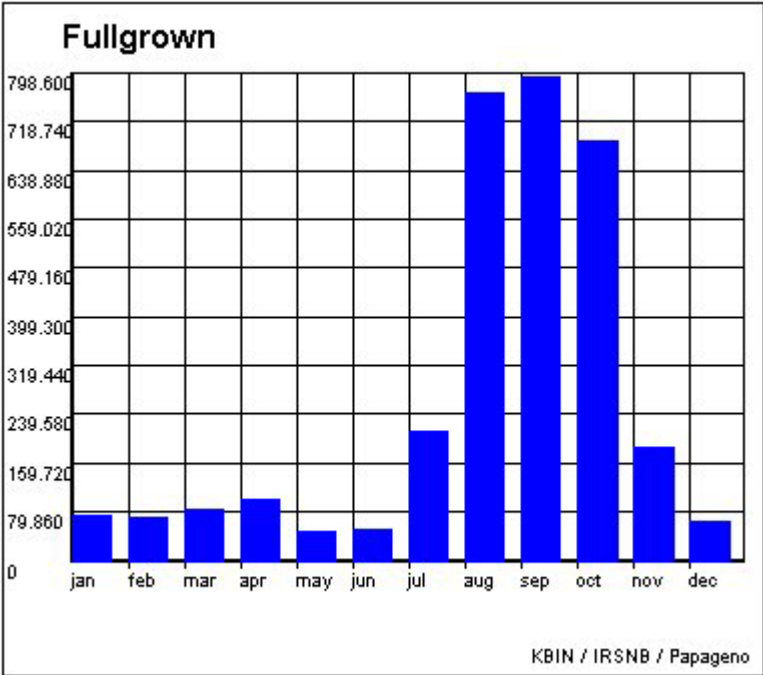
**Ringling and recoveries:** in 2003 a total of 685.032 birds were ringed (85.619 pulli, 599.413 full grown); in 2004 695.353 birds were ringed (95.530 pulli, 599.823 full grown). The evolution of bird ringing since 1960 is shown in the following graphs. More quantitative data are given in annex.



As shown by the following figure the coverage of ringing places throughout the country is rather good.

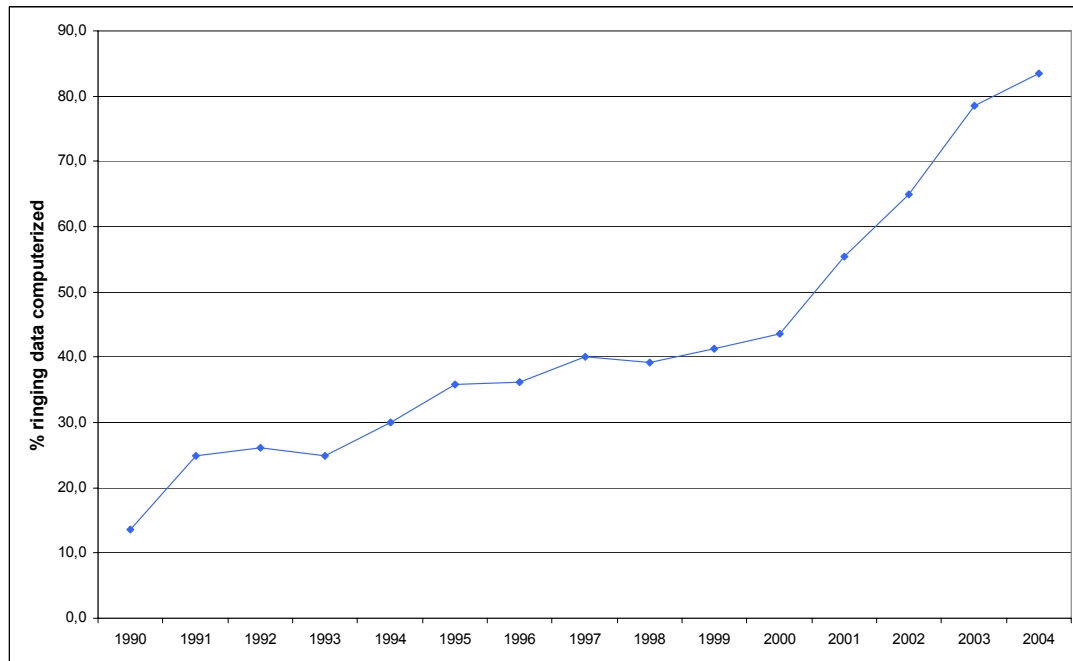


Most of the birds ringed in Belgium are autumn migrants that migrate through the country as shown by the analysis of the 4.500.000 computerized data.



All recoveries from 1927 on are computerised but we are working now in the latest faze of uniformization of the files. We expect this to be realised at the end of 2005.

**Data management:** A software (Papageno, written by Paul Vandebulcke, a ringer) was distributed free to the ringers in 2000. Every year this program has been updated (updates available from the Institutes website). Ringers can enter ringing and recovery data, including measurements, catching effort and biotope description and send them to the Ringing Office by e-mail or on CD. The program offers also many possibilities to the ringers to analyse their own data. Thanks to the fact that some ringers were also encoding older ringing data, more than 4.5 million records are now stored in the central computer of the Institute. For the year 2004, 83,5% of the ringing data are in our computer file. All data were recorded on a volunteer basis. The evolution of computerising effort can be seen on the following graph.



**Finance:** all ringers pay an annual fee (125 €). This covers almost 75% of the price of the rings. All other costs are covered by the Belgian Federal Science Policy.

**Rings:** all Brussels rings are supplied by Mekaniska AB, Sweden.

Walter Roggeman  
Didier Vangeluwe  
Royal Belgian Institute for Natural Sciences  
Belgian Ringing Scheme  
29, Vautier Street  
1000 Brussels  
Belgium  
Fax : +3226274367  
e-mail : [Walter.Roggeman@naturalsciences.be](mailto:Walter.Roggeman@naturalsciences.be)

**top 10 2003**

<b>Global</b>	<b>PU</b>	<b>FG</b>	<b>PU + FG</b>	<b>Pulli</b>	<b>Fullgrown</b>		
<i>Sylvia atricapilla</i>	83	101702	101785	<i>Parus major</i>	27426	<i>Sylvia atricapilla</i>	101702
<i>Acrocephalus scirpaceus</i>	155	76095	76250	<i>Parus caeruleus</i>	21493	<i>Acrocephalus scirpaceus</i>	76095
<i>Parus major</i>	27426	26749	54175	<i>Hirundo rustica</i>	3338	<i>Erithacus rubecola</i>	30928
<i>Parus caeruleus</i>	21493	16456	37949	<i>Falco tinnunculus</i>	2400	<i>Anthus pratensis</i>	28328
<i>Erithacus rubecola</i>	190	30928	31118	<i>Vanellus vanellus</i>	2358	<i>Alauda arvensis</i>	28103
<i>Anthus pratensis</i>	1	28328	28329	<i>Sterna hirundo</i>	2279	<i>Parus major</i>	264749
<i>Alauda arvensis</i>	0	28103	28103	<i>Larus fuscus</i>	1710	<i>Phylloscopus collybita</i>	24206
<i>Phylloscopus collybita</i>	87	24206	24293	<i>Sturnus vulgaris</i>	1657	<i>Prunella modularis</i>	18180
<i>Prunella modularis</i>	135	18180	18315	<i>Athene noctua</i>	1594	<i>Carduelis chloris</i>	16756
<i>Carduelis chloris</i>	64	16756	16820	<i>Ficedula hypoleuca</i>	1428	<i>Parus caeruleus</i>	16456

**top 10 2003**

<b>Global</b>	<b>PU</b>	<b>FG</b>	<b>PU + FG</b>	<b>Pulli</b>	<b>Fullgrown</b>		
<i>Sylvia atricapilla</i>	67	106217	106284	<i>Parus major</i>	30159	<i>Sylvia atricapilla</i>	106217
<i>Acrocephalus scirpaceus</i>	104	77951	78055	<i>Parus caeruleus</i>	22742	<i>Acrocephalus scirpaceus</i>	77951
<i>Parus major</i>	30159	17162	47321	<i>Hirundo rustica</i>	5180	<i>Phylloscopus collybita</i>	38571
<i>Phylloscopus collybita</i>	80	38571	38651	<i>Sterna sandvicensis</i>	3150	<i>Anthus pratensis</i>	30216
<i>Parus caeruleus</i>	22742	15699	38441	<i>Falco tinnunculus</i>	2669	<i>Erithacus rubecola</i>	26917
<i>Anthus pratensis</i>	5	30216	30221	<i>Larus fuscus</i>	2246	<i>Alauda arvensis</i>	25644
<i>Erithacus rubecola</i>	223	26917	27140	<i>Ficedula hypoleuca</i>	2069	<i>Prunella modularis</i>	24811
<i>Alauda arvensis</i>	0	25644	25644	<i>Athene noctua</i>	1927	<i>Hirundo rustica</i>	17855
<i>Prunella modularis</i>	177	24811	24988	<i>Vanellus vanellus</i>	1785	<i>Parus major</i>	17162
<i>Hirundo rustica</i>	5180	17885	23065	<i>Sterna hirundo</i>	1684	<i>Parus caeruleus</i>	15699

**top 10 1960-2004**

<b>Global</b>	<b>PU</b>	<b>FG</b>	<b>PU + FG</b>	<b>Pulli</b>	<b>Fullgrown</b>		
<i>Sylvia atricapilla</i>	5195	1547887	1553082	<i>Parus major</i>	980553	<i>Sylvia atricapilla</i>	1547887
<i>Parus major</i>	980553	532915	1513468	<i>Parus caeruleus</i>	853203	<i>Acrocephalus scirpaceus</i>	1119541
<i>Parus caeruleus</i>	853203	351162	1204365	<i>Hirundo rustica</i>	353496	<i>Sturnus vulgaris</i>	892242
<i>Acrocephalus scirpaceus</i>	9073	1119541	1128614	<i>Larus ridibundus</i>	149868	<i>Anthus pratensis</i>	808784
<i>Hirundo rustica</i>	353496	656988	1010484	<i>Sturnus vulgaris</i>	109805	<i>Alauda arvensis</i>	716718
<i>Sturnus vulgaris</i>	109805	892242	1002047	<i>Parus ater</i>	104263	<i>Hirundo rustica</i>	656988
<i>Anthus pratensis</i>	5574	808784	814358	<i>Passer montanus</i>	98732	<i>Carduelis cannabina</i>	645563
<i>Alauda arvensis</i>	4485	716718	721203	<i>Turdus merula</i>	89183	<i>Erithacus rubecola</i>	628582
<i>Carduelis cannabina</i>	24192	645563	669755	<i>Vanellus vanellus</i>	88294	<i>Fringilla coelebs</i>	602630
<i>Erithacus rubecola</i>	9391	628582	637973	<i>Falco tinnunculus</i>	43717	<i>Carduelis chloris</i>	547681

**top 10 1995-2004**

<b>Global</b>	<b>PU</b>	<b>FG</b>	<b>PU + FG</b>	<b>Pulli</b>	<b>Fullgrown</b>		
<i>Sylvia atricapilla</i>	423	830162	830585	<i>Parus major</i>	254468	<i>Sylvia atricapilla</i>	830162
<i>Acrocephalus scirpaceus</i>	4847	683631	688478	<i>Parus caeruleus</i>	198399	<i>Acrocephalus scirpaceus</i>	683631
<i>Parus major</i>	254468	164891	419359	<i>Hirundo rustica</i>	43050	<i>Alauda arvensis</i>	260252
<i>Parus caeruleus</i>	198399	120798	319197	<i>Larus ridibundus</i>	39519	<i>Erithacus rubecola</i>	256564
<i>Alauda arvensis</i>	69	260252	260321	<i>Vanellus vanellus</i>	28102	<i>Phylloscopus collybita</i>	230469
<i>Erithacus rubecola</i>	1861	256564	258425	<i>Falco tinnunculus</i>	23644	<i>Anthus pratensis</i>	211900
<i>Phylloscopus collybita</i>	647	230469	231116	<i>Parus ater</i>	17763	<i>Prunella modularis</i>	173578
<i>Anthus pratensis</i>	99	211900	211999	<i>Sturnus vulgaris</i>	17283	<i>Parus major</i>	164891
<i>Prunella modularis</i>	1446	173578	175024	<i>Sterna hirundo</i>	15138	<i>Sylvia borin</i>	157128
<i>Sylvia borin</i>	174	157128	157302	<i>Ficedula hypoleuca</i>	14982	<i>Acrocephalus palustris</i>	145727